

Queries

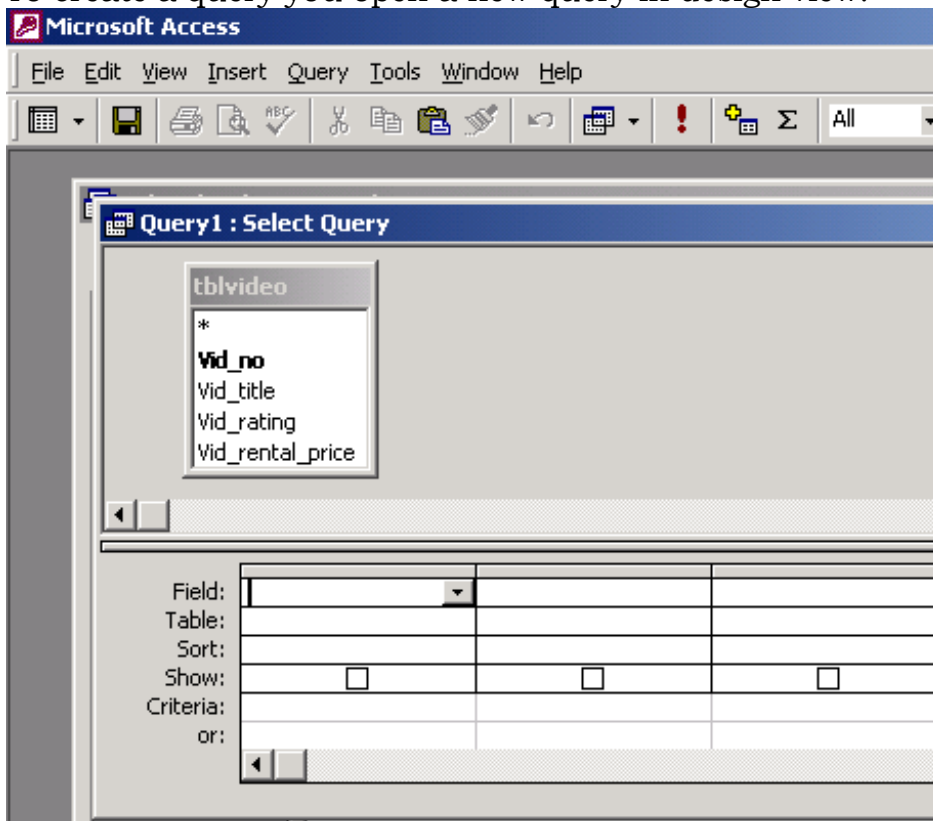
Once a database has been created, the user usually wants to interrogate it to extract information:

Examples of information required from the video database would be:

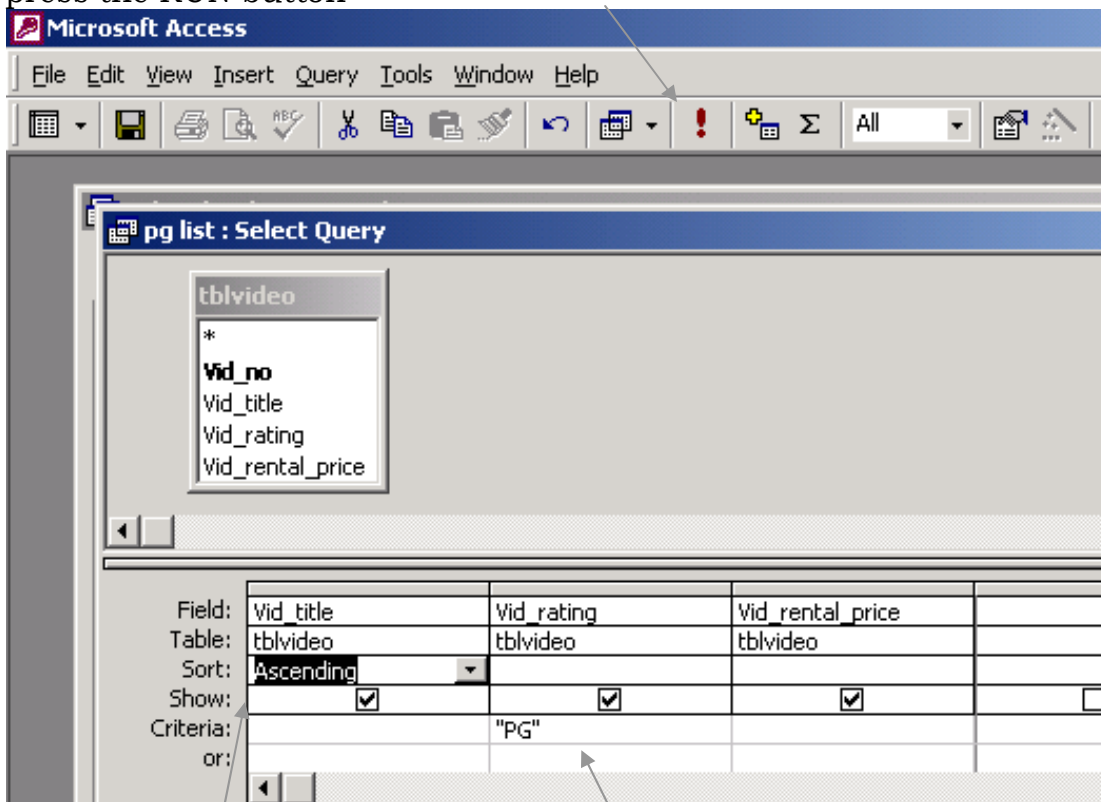
- A list of members who joined last month
- A list of videos rented today
- A list of videos rated PG

Queries can be defined by using a language called SQL (structured Query Language). SQL has a set of rules, which must be followed. Access makes life easier by allowing queries to be input in a more user-friendly format called Query by example (QBE), which automatically translates queries into SQL.

To create a query you open a new query in design view.



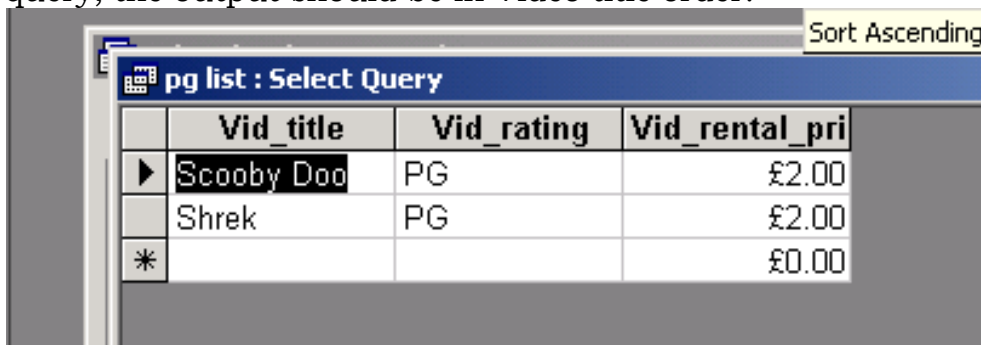
You then select the fields you want to print out in your query and drag them to the columns. We are going to do a list of videos that are PG rating. To run the query press the RUN button



The output will be sorted in Vid_title

The criteria is PG

You will need to enter some video information into your table. Then run the query, the output should be in Video title order:



Activity 11

Individually think of at least 10 queries to use in the video database.

Create a document explaining what the queries are, what they will be used for and what information they will contain. Create and test the queries in the database (you may need to input more data for this).